

AGENDA

LUND WATERWORKS DISTRICT

COURT OF REVISION

5:00 pm, Tuesday, May 28, 2024

Northside Community Centre

9654 Larson Rd, Lund, BC

1. Call to order
2. Introductions
3. Reports
 - a. 2024 Assessment Roll Report, Assessor. **Pg 2**
4. Written Submissions - Nil
5. Verbal Submissions
 - a. Call for additional submissions by attendees.
6. Confirmation of the 2024 Assessment Roll
 - a. Assessor to provide updated Assessment Roll with any changes.
7. Adjournment

Lund Waterworks District

To: Court of Revision
From: Kathleen Day, Assessor
Date: May 23, 2024
Subject: 2024 Assessment Roll

The published 2024 Assessment Roll, based on the Lund Waterworks District Assessment Roll Bylaw No. 52, 2023, includes 148 parcels of land, 138 taxable and 10 non-taxable, placed into the following groupings.

Group 1 – 28 parcels of land (28 taxable and 0 non-taxable)

Group 2 – 84 parcels of land (80 taxable and 4 non-taxable)

Group 3 – 8 parcels of land (7 taxable and 1 non-taxable)

Group 4 - 1 parcel of land (1 taxable and 0 non-taxable)

Group 5 – 0 parcels of land

Group 6 – 0 parcels of land

Group 7 – 4 parcels of land (4 taxable and 0 non-taxable)

Group 8 – 1 parcel of land (1 taxable and 0 non-taxable)

Group 9 – 22 parcels of land (17 taxable and 5 non-taxable)

For the Court's reference, attached to this report are the following documents:

1. Schedule 1 - Lund Waterworks District Assessment Roll Bylaw No. 52, 2023,
2. Schedule 2 – 2024 Draft Assessment Roll as published, and
3. Schedule 3 - Mapping of Assessment Roll Bylaw No. 52, 2023, updated May 8, 2024.

There have been two changes to the 2024 Assessment Roll. Increasing the 2023 total parcels from 147 to 148.

1. One parcel had a water service installation in the past year and has moved from Group 1 to Group 2.

2. One parcel has been added to the 2024 Assessment Roll.
 - a. The qathet Regional District has leased a portion of a parcel of land to Telus for a cellular tower.
 - i. The qRD lands have access to the Lund Waterworks System. This parcel is currently coded as Group 1 as it does not have a water connection.
 - ii. qathet Regional District is non-taxable thus it does not pay the annual parcel tax. However, once they lease land the land becomes taxable.
 - iii. The land leased by Telus is two square feet for the use of a cell tower.
 - iv. The 2024 Draft Assessment Roll has this leased land as taxable, thus, as it currently sits, Telus will be issued a parcel tax for this lease.

As of May 23, 2024, staff have received no written submissions to the Court for consideration. If any late written submissions are received, they will be presented during the Court of Revision.

After the Court considers every submission, written and verbal, the Court will need to confirm the 2024 Assessment Roll as published, or as amended, prior to adjourning the Court of Revision.

To confirm the 2024 Assessment Roll, the following resolution will be required under Section 6 of the agenda.

“The Court of Revision confirms the 2024 assessment roll, (as amended), for the Lund Waterworks District consisting of ____ parcels of land placed into the following groups:

- Group 1 - ____ parcels of land
- Group 2 - ____ parcels of land
- Group 3 - ____ parcels of land
- Group 4 - ____ parcels of land
- Group 5 - ____ parcels of land
- Group 6 - ____ parcels of land
- Group 7 - ____ parcels of land
- Group 8 - ____ parcels of land
- Group 9 - ____ parcels of land.”

Lund Waterworks District

ASSESSMENT ROLL BYLAW NO. 52, 2023

A bylaw to provide for making the assessment roll of the Lund Waterworks District and to determine the basis of assessment and the method to be followed in classifying the lands in the improvement district.

The Receiver of the Lund Waterworks District ENACTS AS FOLLOWS:

1. In this bylaw “parcel” means any lot, block or other area in which land is held or into which land is subdivided.
2. The basis of assessment for the assessment roll shall be parcels of land.
3. The assessor must classify the parcels of land in the improvement district into groups as follows:

Group 1: Each and every parcel of land to which water can be supplied from the existing works of the Lund Waterworks District.

Group 2: Each and every parcel of land which is installed one connection to the existing works of the Lund Waterworks District.

Group 3: Each and every parcel of land which is installed two connections to the existing works of the Lund Waterworks District.

Group 4: Each and every parcel of land which is installed three connections to the existing works of the Lund Waterworks District.

Group 5: Each and every parcel of land which is installed four connections to the existing works of the Lund Waterworks District.

Group 6: Each and every parcel of land which is installed five or more connections to the existing works of the Lund Waterworks District.

Group 7: Each and every parcel of land to which water is supplied from the existing works of the Lund Waterworks District which has a connection size larger than one-and one half inch (1.5”) and smaller than three-inches (3.0”).

Group 8: Each and every parcel of land to which water is supplied from the existing works of the Lund Waterworks District which has a connection size three inches (3.0”) or larger.

Group 9: Each and every parcel of land within the Lund Waterworks District not classified into Group 1, 2, 3, 4, 5, 6, 7, or 8.

4. The assessment roll must be completed annually prior to the billing of taxes.
5. This bylaw may be cited as the “Lund Waterworks District Assessment Bylaw No 52, 2023”.

INTRODUCED and given first reading by the Receiver on the 28th day of May, 2023.

RECONSIDERED and finally passed by the Receiver on the 28th day of May, 2023.

COPY

Receiver

I hereby certify that this is a true copy of Bylaw No. 52, 2023.

COPY

Administrator

**LUND WATERWORKS DISTRICT
DRAFT - 2024 Assessment Roll**

Line No.	Jurisdiction	Roll Number	Classification Group	Taxable	Civic Address	Legal Description
1	747	22672002	Group 9	Yes	LUND, BC	DISTRICT LOT 1611, GROUP 1, NEW WESTMINSTER LAND DISTRICT, EXCEPT PLAN 10686, & EXC PT IN REF PL 1920 2946 3147
2	747	22672003	Group 2	Yes	9636 LARSON RD LUND, BC V0N 2G0	4041 3135 & PL 11071 13653 14797 16666 16808 16968 17212 17853 19080 LMP10228 & EPP80689
3	747	22672004	Group 2	Yes	9570 LARSON RD LUND, BC V0N 2G0	LOT 7, PLAN VAP19080, DISTRICT LOT 1611, GROUP 1, NEW WESTMINSTER LAND DISTRICT
4	747	22672005	Group 2	Yes	9624 LARSON RD LUND, BC V0N 2G0	LOT 8, PLAN VAP19080, DISTRICT LOT 1611, GROUP 1, NEW WESTMINSTER LAND DISTRICT
5	747	22672006	Group 2	Yes	9602 LARSON RD LUND, BC V0N 2G0	LOT 9, PLAN VAP19080, DISTRICT LOT 1611, GROUP 1, NEW WESTMINSTER LAND DISTRICT
6	747	22672007	Group 2	Yes	9584 LARSON RD LUND, BC V0N 2G0	LOT 10, PLAN VAP19080, DISTRICT LOT 1611, GROUP 1, NEW WESTMINSTER LAND DISTRICT
7	747	22672008	Group 1	Yes	9505 LARSON RD LUND, BC V0N 2G0	LOT 11, PLAN VAP19080, DISTRICT LOT 1611, GROUP 1, NEW WESTMINSTER LAND DISTRICT
8	747	22672009	Group 2	Yes	9559 BAYSIDE RD LUND, BC V0N 2G0	LOT 12, PLAN VAP19080, DISTRICT LOT 1611, GROUP 1, NEW WESTMINSTER LAND DISTRICT
9	747	22672011	Group 2	Yes	9577 LARSON RD LUND, BC V0N 2G0	LOT 13, PLAN VAP19080, DISTRICT LOT 1611, GROUP 1, NEW WESTMINSTER LAND DISTRICT
10	747	22672012	Group 2	Yes	9550 BAYSIDE RD LUND, BC V0N 2G0	LOT 15, PLAN VAP19080, DISTRICT LOT 1611, GROUP 1, NEW WESTMINSTER LAND DISTRICT
11	747	22672013	Group 2	Yes	1587 BOAR'S NEST RD LUND, BC V0N 2G0	LOT 16, PLAN VAP19080, DISTRICT LOT 1611, GROUP 1, NEW WESTMINSTER LAND DISTRICT
12	747	22672014	Group 2	Yes	9573 LARSON RD LUND, BC V0N 2G0	LOT 17, PLAN VAP19080, DISTRICT LOT 1611, GROUP 1, NEW WESTMINSTER LAND DISTRICT
13	747	22672015	Group 2	Yes	9576 LARSON RD LUND, BC V0N 2G0	LOT 18, PLAN VAP19080, DISTRICT LOT 1611, GROUP 1, NEW WESTMINSTER LAND DISTRICT
14	747	22672016	Group 2	Yes	9562 LARSON RD LUND, BC V0N 2G0	LOT 19, PLAN VAP19080, DISTRICT LOT 1611, GROUP 1, NEW WESTMINSTER LAND DISTRICT
15	747	22672017	Group 2	Yes	9550 LARSON RD LUND, BC V0N 2G0	LOT 20, PLAN VAP19080, DISTRICT LOT 1611, GROUP 1, NEW WESTMINSTER LAND DISTRICT
16	747	22672018	Group 2	Yes	9553 LARSON RD LUND, BC V0N 2G0	LOT 21, PLAN VAP19080, DISTRICT LOT 1611, GROUP 1, NEW WESTMINSTER LAND DISTRICT
17	747	22672019	Group 2	Yes	9557 LARSON RD LUND, BC V0N 2G0	LOT 22, PLAN VAP19080, DISTRICT LOT 1611, GROUP 1, NEW WESTMINSTER LAND DISTRICT
18	747	22672020	Group 2	Yes	9561 LARSON RD LUND, BC V0N 2G0	LOT 23, PLAN VAP19080, DISTRICT LOT 1611, GROUP 1, NEW WESTMINSTER LAND DISTRICT
19	747	22672022	Group 9	No	9574 ROOTS WAY BC	LOT 24, PLAN VAP19080, DISTRICT LOT 1611, GROUP 1, NEW WESTMINSTER LAND DISTRICT
20	747	22672023	Group 1	Yes	9629 LARSON RD LUND, BC V0N 2G0	LOT 2, PLAN EPP80689, DISTRICT LOT 1611, GROUP 1, NEW WESTMINSTER LAND DISTRICT
21	747	22672024	Group 2	Yes	1500 SORENSON RD LUND, BC V0N 2G0	LOT A, PLAN EPP104457, DISTRICT LOT 1611, GROUP 1, NEW WESTMINSTER LAND DISTRICT
22	747	22672050	Group 9	Yes	1731 HIGHWAY 101 POWELL RIVER, BC V8A 0G6	LOT B, PLAN EPP104457, DISTRICT LOT 1611, GROUP 1, NEW WESTMINSTER LAND DISTRICT
23	747	22672100	Group 9	Yes	1747 HIGHWAY 101 POWELL RIVER, BC V8A 0G6	LOT 2, PLAN VAP16808, DISTRICT LOT 1611, GROUP 1, NEW WESTMINSTER LAND DISTRICT
24	747	22672150	Group 2	Yes	9644 QUARRY PL LUND, BC V0N 2G0	LOT 3, PLAN VAP16808, DISTRICT LOT 1611, GROUP 1, NEW WESTMINSTER LAND DISTRICT
25	747	22672170	Group 2	Yes	9651 QUARRY PL LUND, BC V0N 2G0	LOT A, PLAN VAP16968, DISTRICT LOT 1611, GROUP 1, NEW WESTMINSTER LAND DISTRICT
26	747	22672180	Group 2	Yes	9649 QUARRY PL LUND, BC V0N 2G0	LOT C, PLAN VAP16968, DISTRICT LOT 1611, NEW WESTMINSTER LAND DISTRICT
27	747	22672190	Group 2	Yes	1443 MURRAY RD LUND, BC V0N 2G0	LOT D, PLAN VAP16968, DISTRICT LOT 1611, GROUP 1, NEW WESTMINSTER LAND DISTRICT
28	747	22672200	Group 2	Yes	9627 QUARRY PL LUND, BC V0N 2G0	LOT E, PLAN VAP16968, DISTRICT LOT 1611, GROUP 1, NEW WESTMINSTER LAND DISTRICT
29	747	22672210	Group 2	Yes	9626 QUARRY PL LUND, BC V0N 2G0	LOT F, PLAN VAP16968, DISTRICT LOT 1611, GROUP 1, NEW WESTMINSTER LAND DISTRICT
30	747	22672220	Group 2	Yes	9624 QUARRY PL LUND, BC V0N 2G0	LOT G, PLAN VAP16968, DISTRICT LOT 1611, GROUP 1, NEW WESTMINSTER LAND DISTRICT
31	747	22672230	Group 3	Yes	9622 QUARRY PL LUND, BC V0N 2G0	LOT H, PLAN VAP16968, DISTRICT LOT 1611, GROUP 1, NEW WESTMINSTER LAND DISTRICT
32	747	22673000	Group 3	Yes	1427 MURRAY RD LUND, BC V0N 2G0	LOT J, PLAN VAP16968, DISTRICT LOT 1611, GROUP 1, NEW WESTMINSTER LAND DISTRICT
33	747	22675001	Group 2	Yes	1684 HIGHWAY 101 POWELL RIVER, BC V8A 0G6	LOT A, PLAN VAP1920R, DISTRICT LOT 1611, GROUP 1, NEW WESTMINSTER LAND DISTRICT
34	747	22675002	Group 2	Yes	1724 HIGHWAY 101 POWELL RIVER, BC V8A 0G6	LOT 1, PLAN EPP90839, DISTRICT LOT 1611, GROUP 1, NEW WESTMINSTER LAND DISTRICT
35	747	22677000	Group 2	No	9656 LARSON RD LUND, BC V0N 2G0	LOT 2, PLAN EPP90839, DISTRICT LOT 1611, GROUP 1, NEW WESTMINSTER LAND DISTRICT
36	747	22677010	Group 2	Yes	1480 MURRAY RD LUND, BC V0N 2G0	PLAN VAP4041R, DISTRICT LOT 1611, GROUP 1, NEW WESTMINSTER LAND DISTRICT
37	747	22678010	Group 1	Yes	9655 LARSON RD LUND, BC V0N 2G0	LOT A, PLAN BCP8054, DISTRICT LOT 1611, GROUP 1, NEW WESTMINSTER LAND DISTRICT, & DL 1612
38	747	22679000	Group 3	Yes	9675 LONG ACRE RD LUND, BC V0N 2G0	LOT 1, PLAN VAP17212, DISTRICT LOT 1611, GROUP 1, NEW WESTMINSTER LAND DISTRICT, & DL 1612
39	747	22679005	Group 2	Yes	1469 SORENSON RD LUND, BC V0N 2G0	BLOCK G, PLAN VAP11071, DISTRICT LOT 1611, GROUP 1, NEW WESTMINSTER LAND DISTRICT, & DL 1612
40	747	22679020	Group 2	Yes	B 1404 MURRAY RD LUND, BC V0N 2G0	LOT A, PLAN BCP11897, DISTRICT LOT 1611, GROUP 1, NEW WESTMINSTER LAND DISTRICT
41	747	22679030	Group 3	Yes	1401 MURRAY RD LUND, BC V0N 2G0	LOT 12, PLAN VAP13653, DISTRICT LOT 1611, GROUP 1, NEW WESTMINSTER LAND DISTRICT, & DL 1612
42	747	22680003	Group 1	Yes	9730 EMIL RD LUND, BC V0N 2G0	LOT 1, PLAN VAP14797, DISTRICT LOT 1611, GROUP 1, NEW WESTMINSTER LAND DISTRICT DISTRICT LOT 1612, GROUP 1, NEW WESTMINSTER LAND DISTRICT, EXCEPT PLAN 5511R, & EXC PL 10681 10686 11021 11071 13317 13653 16968 17073 17853 18464 20380 & LMP1936

**LUND WATERWORKS DISTRICT
DRAFT - 2024 Assessment Roll**

Line No.	Jurisdiction	Roll Number	Classification Group	Taxable	Civic Address	Legal Description
43	747	22680005	Group 1	Yes	HIGHWAY 101 LUND, BC V0N 2G0	LOT 25, PLAN LMP1936, DISTRICT LOT 1612, GROUP 1, NEW WESTMINSTER LAND DISTRICT
44	747	22680010	Group 2	Yes	1534 SCOTCH PL LUND, BC V0N 2G0	LOT 12, PLAN VAP17073, DISTRICT LOT 1612, GROUP 1, NEW WESTMINSTER LAND DISTRICT
45	747	22680015	Group 2	Yes	1540 SCOTCH PL LUND, BC V0N 2G0	LOT 13, PLAN VAP17073, DISTRICT LOT 1612, GROUP 1, NEW WESTMINSTER LAND DISTRICT
46	747	22680020	Group 1	Yes	SCOTCH PL LUND, BC V0N 2G0	LOT 14, PLAN VAP17073, DISTRICT LOT 1612, GROUP 1, NEW WESTMINSTER LAND DISTRICT
47	747	22680025	Group 2	Yes	1543 SCOTCH PL LUND, BC V0N 2G0	LOT 15, PLAN VAP17073, DISTRICT LOT 1612, GROUP 1, NEW WESTMINSTER LAND DISTRICT
48	747	22680030	Group 1	Yes	HIGHWAY 101 LUND, BC V0N 2G0	LOT 16, PLAN VAP17073, DISTRICT LOT 1612, GROUP 1, NEW WESTMINSTER LAND DISTRICT
49	747	22680035	Group 2	Yes	1548 HIGHWAY 101 LUND, BC V0N 2G0	LOT 17, PLAN VAP17073, DISTRICT LOT 1612, GROUP 1, NEW WESTMINSTER LAND DISTRICT
50	747	22680040	Group 2	Yes	1545 SCOTCH PL LUND, BC V0N 2G0	LOT 18, PLAN VAP17073, DISTRICT LOT 1612, GROUP 1, NEW WESTMINSTER LAND DISTRICT
51	747	22680045	Group 2	Yes	1530 SCOTCH PL LUND, BC V0N 2G0	LOT 19, PLAN VAP17073, DISTRICT LOT 1612, GROUP 1, NEW WESTMINSTER LAND DISTRICT
52	747	22680050	Group 1	Yes	9739 EMIL RD LUND, BC V0N 2G0	LOT 20, PLAN VAP18464, DISTRICT LOT 1612, GROUP 1, NEW WESTMINSTER LAND DISTRICT
53	747	22680055	Group 2	Yes	1520 HIGHWAY 101 LUND, BC V0N 2G0	LOT 21, PLAN VAP18464, DISTRICT LOT 1612, GROUP 1, NEW WESTMINSTER LAND DISTRICT
54	747	22681005	Group 1	Yes	1507 HIGHWAY 101 LUND, BC V0N 2G0	LOT 1, PLAN VAP17853, DISTRICT LOT 1612, GROUP 1, NEW WESTMINSTER LAND DISTRICT
55	747	22681080	Group 1	Yes	1549 HIGHWAY 101 LUND, BC V0N 2G0	LOT 4, PLAN VAP17853, DISTRICT LOT 1612, GROUP 1, NEW WESTMINSTER LAND DISTRICT
56	747	22681085	Group 1	Yes	9665 LARSON RD LUND, BC V0N 2G0	LOT 5, PLAN VAP17853, DISTRICT LOT 1611, GROUP 1, NEW WESTMINSTER LAND DISTRICT, & DL 1612
57	747	22681090	Group 2	No	9642 LARSON RD LUND, BC V0N 2G0	LOT 6, PLAN VAP17853, DISTRICT LOT 1611, GROUP 1, NEW WESTMINSTER LAND DISTRICT
58	747	22681150	Group 2	Yes	1672 HIGHWAY 101 LUND, BC V0N 2G0	LOT 25, PLAN LMP10228, DISTRICT LOT 1611, GROUP 1, NEW WESTMINSTER LAND DISTRICT
59	747	22681155	Group 1	Yes	1608 BOARS NEST RD LUND, BC V0N 2G0	LOT 26, PLAN LMP10228, DISTRICT LOT 1611, GROUP 1, NEW WESTMINSTER LAND DISTRICT, EXCEPT PLAN EPP51295
60	747	22681158	Group 2	Yes	1615 BOARS NEST RD LUND, BC V0N 2G0	LOT A, PLAN EPP118629, DISTRICT LOT 1611, GROUP 1, NEW WESTMINSTER LAND DISTRICT
61	747	22681175	Group 2	Yes	1495 SORENSON RD LUND, BC V0N 2G0	LOT 1, PLAN BCP39637, DISTRICT LOT 1611, GROUP 1, NEW WESTMINSTER LAND DISTRICT
62	747	22681180	Group 2	Yes	9541 BAYSIDE RD LUND, BC V0N 2G0	LOT 2, PLAN BCP39637, DISTRICT LOT 1611, GROUP 1, NEW WESTMINSTER LAND DISTRICT
63	747	22681250	Group 3	Yes	1608 BOARS NEST RD LUND, BC V0N 2G0	LOT 1, PLAN EPP51295, DISTRICT LOT 1611, GROUP 1, NEW WESTMINSTER LAND DISTRICT
64	747	22681275	Group 2	Yes	1599 BOAR'S NEST RD LUND, BC V0N 2G0	LOT 2, PLAN EPP51295, DISTRICT LOT 1611, GROUP 1, NEW WESTMINSTER LAND DISTRICT
65	747	22684005	Group 2	Yes	9781 EDMONDSON RD LUND, BC V0N 2G0	LOT 5, PLAN VAP13317, DISTRICT LOT 1612, GROUP 1, NEW WESTMINSTER LAND DISTRICT
66	747	22684010	Group 2	Yes	9773 EDMONDSON RD LUND, BC V0N 2G0	LOT 6, PLAN VAP13317, DISTRICT LOT 1612, GROUP 1, NEW WESTMINSTER LAND DISTRICT
67	747	22684015	Group 2	Yes	1474 HIGHWAY 101 LUND, BC V0N 2G0	LOT 7, PLAN VAP13317, DISTRICT LOT 1612, GROUP 1, NEW WESTMINSTER LAND DISTRICT
68	747	22684022	Group 2	Yes	9780 EDMONDSON RD LUND, BC V0N 2G0	LOT 8, PLAN VAP13317, DISTRICT LOT 1612, GROUP 1, NEW WESTMINSTER LAND DISTRICT
69	747	22684025	Group 1	Yes	FINN BAY RD LUND, BC V0N 2G0	LOT 9, PLAN VAP13317, DISTRICT LOT 1612, GROUP 1, NEW WESTMINSTER LAND DISTRICT
70	747	22684030	Group 1	Yes	9789 FINN BAY RD LUND, BC V0N 2G0	LOT 10, PLAN VAP13317, DISTRICT LOT 1612, GROUP 1, NEW WESTMINSTER LAND DISTRICT
71	747	22684035	Group 2	Yes	9791 EDMONDSON RD LUND, BC V0N 2G0	LOT 11, PLAN VAP13317, DISTRICT LOT 1612, GROUP 1, NEW WESTMINSTER LAND DISTRICT
72	747	22684040	Group 1	Yes	9744 EMIL RD LUND, BC V0N 2G0	LOT 22, PLAN VAP20380, DISTRICT LOT 1612, GROUP 1, NEW WESTMINSTER LAND DISTRICT
73	747	22684100	Group 7	Yes	1496 MURRAY RD LUND, BC V0N 2G0	LOT 23, PLAN VAP20882, DISTRICT LOT 1611, GROUP 1, NEW WESTMINSTER LAND DISTRICT, EXCEPT PLAN BCP8054, & DL 1612, MANUFACTURED HOME REG.# 26628
74	747	22684105	Group 3	Yes	1451 HIGHWAY 101 LUND, BC V0N 2G0	LOT 24, PLAN VAP20882, DISTRICT LOT 1611, GROUP 1, NEW WESTMINSTER LAND DISTRICT, & DL 1612, MANUFACTURED HOME REG.# 23144
75	747	22684150	Group 2	Yes	1431 HIGHWAY 101 LUND, BC V0N 2G0	LOT A, PLAN LMP26444, DISTRICT LOT 1612, GROUP 1, NEW WESTMINSTER LAND DISTRICT
76	747	22685100	Group 9	Yes	10024 BAGGI RD LUND, BC V0N 2G0	LOT A, PLAN VAP16312, DISTRICT LOT 1613, GROUP 1, NEW WESTMINSTER LAND DISTRICT
77	747	22685200	Group 9	Yes	10000 BAGGI RD LUND, BC V0N 2G0	LOT B, PLAN VAP16312, DISTRICT LOT 1613, GROUP 1, NEW WESTMINSTER LAND DISTRICT, & DL 1614
78	747	22685300	Group 9	Yes	BC	LOT C, PLAN VAP16312, DISTRICT LOT 1613, GROUP 1, NEW WESTMINSTER LAND DISTRICT, & DL 1614
79	747	22685350	Group 9	No	9810 FINN BAY RD LUND, BC V0N 2G0	BLOCK 1, PLAN VAP22293, DISTRICT LOT 1613, GROUP 1, NEW WESTMINSTER LAND DISTRICT, EXCEPT PLAN EPP69773, & DL 1614
80	747	22685351	Group 2	No	9810 FINN BAY RD LUND, BC V0N 2G0	LOT A, PLAN EPP69773, DISTRICT LOT 1613, GROUP 1, NEW WESTMINSTER LAND DISTRICT, & DL 1614
81	747	22685352	Group 2	Yes	FINN BAY RD LUND, BC	LOT A, PLAN EPP69773, DISTRICT LOT 1613, GROUP 1, NEW WESTMINSTER LAND DISTRICT, & DL 1614; LEASE ISSUED FOR CELL TOWER

**LUND WATERWORKS DISTRICT
DRAFT - 2024 Assessment Roll**

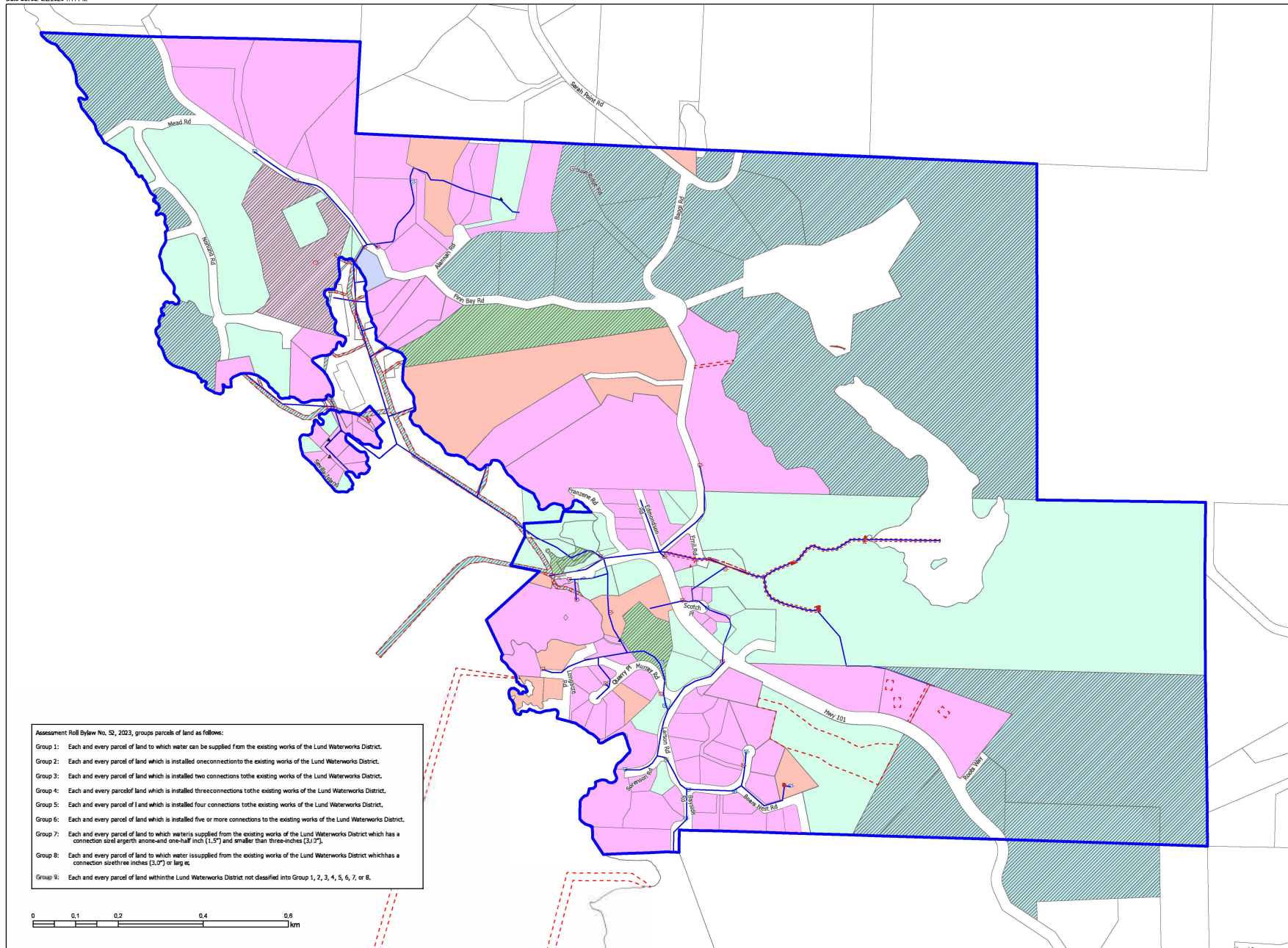
Line No.	Jurisdiction	Roll Number	Classification Group	Taxable	Civic Address	Legal Description
82	747	22686001	Group 2	Yes	9827 FINN BAY RD LUND, BC V0N 2G0	DISTRICT LOT 1614, GROUP 1, NEW WESTMINSTER LAND DISTRICT, EXCEPT PLAN 8584, & EXC PL 16312 3731R 3827R 5975R 4597EP 16091 18676R 22293 & LMP33791, MANUFACTURED HOME REG.# 86016
83	747	22686100	Group 9	Yes	10031 SARAH POINT RD LUND, BC V0N 2G0	LOT D, PLAN VAP16312, DISTRICT LOT 1614, GROUP 1, NEW WESTMINSTER LAND DISTRICT
84	747	22686200	Group 9	Yes	1474 GROUSE RIDGE RD LUND, BC V0N 2G0	LOT E, PLAN VAP16312, DISTRICT LOT 1614, GROUP 1, NEW WESTMINSTER LAND DISTRICT
85	747	22686300	Group 9	Yes	1477 GROUSE RIDGE RD LUND, BC V0N 2G0	LOT F, PLAN VAP16312, DISTRICT LOT 1614, GROUP 1, NEW WESTMINSTER LAND DISTRICT
86	747	22686400	Group 9	Yes	1455 GROUSE RIDGE RD LUND, BC V0N 2G0	LOT G, PLAN VAP16312, DISTRICT LOT 1614, GROUP 1, NEW WESTMINSTER LAND DISTRICT
87	747	22686500	Group 9	Yes	9900 FINN BAY RD LUND, BC V0N 2G0	LOT H, PLAN VAP16312, DISTRICT LOT 1614, GROUP 1, NEW WESTMINSTER LAND DISTRICT
88	747	22686600	Group 9	Yes	1349 ALANNAH RD LUND, BC V0N 2G0	LOT J, PLAN VAP16312, DISTRICT LOT 1614, GROUP 1, NEW WESTMINSTER LAND DISTRICT
89	747	22686700	Group 2	Yes	1272 ALANNAH RD LUND, BC V0N 2G0	LOT K, PLAN VAP16312, DISTRICT LOT 1614, GROUP 1, NEW WESTMINSTER LAND DISTRICT
90	747	22686800	Group 2	Yes	1343 GROUSE RIDGE RD LUND, BC V0N 2G0	LOT A, PLAN EPP17762, DISTRICT LOT 1614, GROUP 1, NEW WESTMINSTER LAND DISTRICT
91	747	22686805	Group 2	Yes	1355 GROUSE RIDGE RD LUND, BC V0N 2G0	LOT B, PLAN EPP17762, DISTRICT LOT 1614, GROUP 1, NEW WESTMINSTER LAND DISTRICT
92	747	22686850	Group 9	Yes	1423 GROUSE RIDGE RD LUND, BC V0N 2G0	LOT I, BLOCK L, PLAN VAP19216, DISTRICT LOT 1614, GROUP 1, NEW WESTMINSTER LAND DISTRICT
93	747	22686855	Group 2	Yes	1411 GROUSE RIDGE RD LUND, BC V0N 2G0	LOT 2, PLAN VAP19462, DISTRICT LOT 1614, GROUP 1, NEW WESTMINSTER LAND DISTRICT, OF LOT L
94	747	22686860	Group 1	Yes	1383 GROUSE RIDGE RD LUND, BC V0N 2G0	LOT 3, PLAN VAP19462, SUBLOT L, DISTRICT LOT 1614, GROUP 1, NEW WESTMINSTER LAND DISTRICT
95	747	22686870	Group 3	Yes	1331 GROUSE RIDGE RD LUND, BC V0N 2G0	LOT 5, PLAN VAP19462, SUBLOT L, DISTRICT LOT 1614, GROUP 1, NEW WESTMINSTER LAND DISTRICT
96	747	22686875	Group 2	Yes	1250 ALANNAH RD LUND, BC V0N 2G0	LOT 6, BLOCK L, PLAN VAP19462, DISTRICT LOT 1614, GROUP 1, NEW WESTMINSTER LAND DISTRICT LOT C, PLAN VAP3731R, DISTRICT LOT 1614, GROUP 1, NEW WESTMINSTER LAND DISTRICT, EXCEPT PLAN 11749, & EXC PL 12488
97	747	22687000	Group 7	Yes	9907 FINN BAY RD LUND, BC V0N 2G0	LOT D, PLAN VAP3827R, DISTRICT LOT 1614, GROUP 1, NEW WESTMINSTER LAND DISTRICT
98	747	22688000	Group 2	Yes	9821 FINN BAY RD LUND, BC V0N 2G0	LOT 1, PLAN BCP10424, DISTRICT LOT 1614, GROUP 1, NEW WESTMINSTER LAND DISTRICT
99	747	22689005	Group 2	Yes	9951 FINN BAY RD LUND, BC V0N 2G0	LOT 2, PLAN BCP10424, DISTRICT LOT 1614, GROUP 1, NEW WESTMINSTER LAND DISTRICT
100	747	22689010	Group 2	Yes	9939 FINN BAY RD LUND, BC V0N 2G0	LOT M, PLAN VAP17117, DISTRICT LOT 1614, GROUP 1, NEW WESTMINSTER LAND DISTRICT
101	747	22690050	Group 2	Yes	1308 ALANNAH RD LUND, BC V0N 2G0	PARCEL N, PLAN LMP25898, DISTRICT LOT 1614, GROUP 1, NEW WESTMINSTER LAND DISTRICT, & DL 7866 & 7867
102	747	22692000	Group 4	Yes	9971 FINN BAY RD LUND, BC V0N 2G0	LOT 1, PLAN VAP11749, SUBLOT C, DISTRICT LOT 1614, GROUP 1, NEW WESTMINSTER LAND DISTRICT
103	747	22693000	Group 2	Yes	9911 FINN BAY RD LUND, BC V0N 2G0	LOT 2, BLOCK C, PLAN VAP12488, DISTRICT LOT 1614, GROUP 1, NEW WESTMINSTER LAND DISTRICT
104	747	22694000	Group 2	Yes	9911 FINN BAY RD LUND, BC V0N 2G0	LOT N, PLAN LMP33791, DISTRICT LOT 1612, GROUP 1, NEW WESTMINSTER LAND DISTRICT, & DL 1614
105	747	22694100	Group 2	Yes	9803 FRANZENE RD LUND, BC V0N 2G0	LOT 1, BLOCK A, PLAN VAP13562, DISTRICT LOT 1641, GROUP 1, NEW WESTMINSTER LAND DISTRICT
106	747	22715010	Group 2	Yes	9533 BAYSIDE RD LUND, BC V0N 2G0	LOT 4, PLAN VAP16666, DISTRICT LOT 1611, GROUP 1, NEW WESTMINSTER LAND DISTRICT, & DL 1641
107	747	22715500	Group 9	Yes	1840 HIGHWAY 101 POWELL RIVER, BC V8A 0G6	LOT F, PLAN VAP15599, DISTRICT LOT 4193, GROUP 1, NEW WESTMINSTER LAND DISTRICT
108	747	23032050	Group 9	Yes	1080 MEAD RD LUND, BC V0N 2G0	LOT A, PLAN VAP8584, DISTRICT LOT 1614, GROUP 1, NEW WESTMINSTER LAND DISTRICT
109	747	23033010	Group 1	Yes	9975 FINN BAY RD LUND, BC V0N 2G0	BLOCK B, PLAN VAP2832R, DISTRICT LOT 4193, GROUP 1, NEW WESTMINSTER LAND DISTRICT
110	747	23034000	Group 2	Yes	9910 NORLUND RD LUND, BC V0N 2G0	LOT C, PLAN VAP2870R, DISTRICT LOT 4193, GROUP 1, NEW WESTMINSTER LAND DISTRICT
111	747	23035000	Group 2	Yes	B 9877 NORLUND RD LUND, BC V0N 2G0	LOT D, PLAN VAP2872R, DISTRICT LOT 4193, GROUP 1, NEW WESTMINSTER LAND DISTRICT
112	747	23036000	Group 1	Yes	9991 FINN BAY RD LUND, BC V0N 2G0	LOT E, PLAN VAP13500, DISTRICT LOT 4193, GROUP 1, NEW WESTMINSTER LAND DISTRICT
113	747	23036010	Group 2	Yes	9873 NORLUND RD LUND, BC V0N 2G0	LOT G, PLAN VAP18045, DISTRICT LOT 4193, GROUP 1, NEW WESTMINSTER LAND DISTRICT, EXCEPT PLAN 19374, & EXC PL 20964
114	747	23036100	Group 2	Yes	10080 FINN BAY RD LUND, BC V0N 2G0	LOT H, PLAN VAP18045, DISTRICT LOT 4193, GROUP 1, NEW WESTMINSTER LAND DISTRICT
115	747	23036150	Group 8	Yes	9985 FINN BAY RD LUND, BC V0N 2G0	LOT 1, BLOCK G, PLAN VAP19374, DISTRICT LOT 4193, GROUP 1, NEW WESTMINSTER LAND DISTRICT
116	747	23036200	Group 2	Yes	10118 FINN BAY RD LUND, BC V0N 2G0	LOT 2, BLOCK G, PLAN VAP19374, DISTRICT LOT 4193, GROUP 1, NEW WESTMINSTER LAND DISTRICT
117	747	23036210	Group 2	Yes	10088 FIN BAY RD LUND, BC V0N 2G0	LOT 3, BLOCK G, PLAN VAP19374, DISTRICT LOT 4193, GROUP 1, NEW WESTMINSTER LAND DISTRICT
118	747	23036220	Group 2	Yes	10060 FINN BAY RD LUND, BC V0N 2G0	LOT 4, PLAN VAP20964, DISTRICT LOT 4193, GROUP 1, NEW WESTMINSTER LAND DISTRICT
119	747	23036250	Group 2	Yes	10038 FINN BAY RD LUND, BC V0N 2G0	LOT 1, PLAN EPP32389, DISTRICT LOT 4193, GROUP 1, NEW WESTMINSTER LAND DISTRICT
120	747	23036500	Group 1	Yes	1075 MEAD RD POWELL RIVER, BC	LOT 2, PLAN EPP32389, DISTRICT LOT 4193, GROUP 1, NEW WESTMINSTER LAND DISTRICT
121	747	23036550	Group 9	Yes	9869 NORLUND RD LUND, BC V0N 2G0	LOT 2, PLAN EPP32389, DISTRICT LOT 4193, GROUP 1, NEW WESTMINSTER LAND DISTRICT
122	747	23036600	Group 9	No	10019 NORLUND RD LUND, BC V0N 2G0	PLAN EPP32389, DISTRICT LOT 4193, GROUP 1, NEW WESTMINSTER LAND DISTRICT, DEDICATED PARK

**LUND WATERWORKS DISTRICT
DRAFT - 2024 Assessment Roll**

Line No.	Jurisdiction	Roll Number	Classification Group	Taxable	Civic Address	Legal Description
123	747	24233000	Group 2	Yes	9844 SEVILLA ISLAND LUND, BC V0N 2G0	LOT B, PLAN VAP10022, DISTRICT LOT 5582, GROUP 1, NEW WESTMINSTER LAND DISTRICT
124	747	24235000	Group 2	Yes	9832 SEVILLA ISLAND LUND, BC V0N 2G0	LOT C, PLAN VAP10022, DISTRICT LOT 5582, GROUP 1, NEW WESTMINSTER LAND DISTRICT
125	747	24236000	Group 2	Yes	9836 SEVILLA ISLAND LUND, BC V0N 2G0	LOT D, PLAN VAP10022, DISTRICT LOT 5582, GROUP 1, NEW WESTMINSTER LAND DISTRICT
126	747	24237000	Group 1	Yes	SEVILLA ISLAND LUND, BC V0N 2G0	LOT E, PLAN VAP10022, DISTRICT LOT 5582, NEW WESTMINSTER LAND DISTRICT
127	747	24238000	Group 2	Yes	9824 SEVILLA ISLAND LUND, BC V0N 2G0	LOT F, PLAN VAP10022, DISTRICT LOT 5582, GROUP 1, NEW WESTMINSTER LAND DISTRICT
128	747	24239000	Group 2	Yes	9820 SEVILLA ISLAND LUND, BC V0N 2G0	LOT G, PLAN VAP10022, DISTRICT LOT 5582, GROUP 1, NEW WESTMINSTER LAND DISTRICT
129	747	24240000	Group 2	Yes	9816 SEVILLA ISLAND LUND, BC V0N 2G0	LOT H, PLAN VAP10022, DISTRICT LOT 5582, GROUP 1, NEW WESTMINSTER LAND DISTRICT
130	747	24241000	Group 1	Yes	BC	LOT I, PLAN VAP10022, DISTRICT LOT 5582, GROUP 1, NEW WESTMINSTER LAND DISTRICT
131	747	24242000	Group 2	Yes	9808 SEVILLA ISLAND LUND, BC V0N 2G0	LOT J, PLAN VAP10022, DISTRICT LOT 5582, GROUP 1, NEW WESTMINSTER LAND DISTRICT
132	747	24243000	Group 1	Yes	SEVILLA ISLAND LUND, BC V0N 2G0	LOT K, PLAN VAP10022, DISTRICT LOT 5582, GROUP 1, NEW WESTMINSTER LAND DISTRICT
133	747	24244000	Group 2	Yes	9848 SEVILLA ISLAND LUND, BC V0N 2G0	LOT L, PLAN VAP10022, DISTRICT LOT 5582, GROUP 1, NEW WESTMINSTER LAND DISTRICT
134	747	24245000	Group 2	Yes	9838 SEVILLA ISLAND LUND, BC V0N 2G0	LOT M, PLAN VAP10022, DISTRICT LOT 5582, GROUP 1, NEW WESTMINSTER LAND DISTRICT
135	747	25013000	Group 9	No	BC	PLAN VAP5198R, DISTRICT LOT 6725, GROUP 1, NEW WESTMINSTER LAND DISTRICT, DIST LINE SRW ACROSS BED OF FINN BAY OIC 1242/67
136	747	27147100	Group 3	No	BC	DISTRICT LOT 6343, GROUP 1, NEW WESTMINSTER LAND DISTRICT, WHARFSITE & APPROACH LUND
137	747	27153100	Group 2	No	1439 HIGHWAY 101 LUND, BC V0N 2G0	DISTRICT LOT 6695, GROUP 1, NEW WESTMINSTER LAND DISTRICT, BOAT HARBOUR LUND
138	747	27162000	Group 1	Yes	1444 HIGHWAY 101 LUND, BC V0N 2G0	DISTRICT LOT 7806, GROUP 1, NEW WESTMINSTER LAND DISTRICT, DIESEL MARINE MAINTENANCE FACILITY, LEASE/PERMIT/LICENCE # 238542
139	747	27164000	Group 1	Yes	LUND HARBOUR LUND, BC V0N 2G0	BLOCK D, DISTRICT LOT 7067, GROUP 1, NEW WESTMINSTER LAND DISTRICT, DIESEL MARINE MAINTENANCE FACILITY, LEASE/PERMIT/LICENCE # 238544
140	747	27507200	Group 2	Yes	FINN COVE LUND, BC V0N 2G0	GROUP 1, NEW WESTMINSTER LAND DISTRICT, OCCUPIER OF CROWN LAND RESTAURANT & STUDIO
141	747	27507548	Group 1	Yes	FINN BAY RD LUND, BC V0N 2G0	LOT B, PLAN VAP10022, DISTRICT LOT 5582, GROUP 1, NEW WESTMINSTER LAND DISTRICT, FORESHORE FRONTING ON SEVILLA ISLAND - PRIVATE MOORAGE
142	747	27507576	Group 9	No	BC	GROUP 1, NEW WESTMINSTER LAND DISTRICT, PT DL 3232 6343 6695 6772 7067 & 7806 CONSTRUCTING, OPERATING & REPAIRING SEWER MAIN, LEASE/PERMIT/LICENCE # 242910
143	747	27507806	Group 9	Yes	FINN COVE LUND, BC V0N 2G0	GROUP 1, NEW WESTMINSTER LAND DISTRICT, UNSURVEYED FORESHORE OR LAND COVERED BY WATER BEING PART OF THE BED OF FINN COVE: FOR WATER TAXI PURPOSES, LEASE/PERMIT/LICENCE # 244572
144	416	10950000	Group 7	Yes	1436 HIGHWAY 101 POWELL RIVER, BC	BLOCK A, PLAN EPP59494, DISTRICT LOT 7067, GROUP 1, NEW WESTMINSTER LAND DISTRICT, & DL 7806 AS SHOWN ON PL
145	416	10950050	Group 7	Yes	HIGHWAY 101 POWELL RIVER, BC	BLOCK C, PLAN EPP59494, DISTRICT LOT 7067, GROUP 1, NEW WESTMINSTER LAND DISTRICT, & DL 7806 AS SHOWN ON PL
146	416	22681025	Group 1	Yes	1436 HIGHWAY 101 LUND, BC V0N 2G0	LOT 2, PLAN VAP17853, DISTRICT LOT 1612, GROUP 1, NEW WESTMINSTER LAND DISTRICT, EXCEPT PLAN LMP26444
147	416	22683000	Group 1	Yes	9766 FRANZENE RD LUND, BC V0N 2G0	BLOCK 3, PLAN VAP10681, DISTRICT LOT 1612, GROUP 1, NEW WESTMINSTER LAND DISTRICT
148	416	22684000	Group 1	Yes	1460 HIGHWAY 101 LUND, BC V0N 2G0	LOT 4, PLAN VAP11021, DISTRICT LOT 1612, GROUP 1, NEW WESTMINSTER LAND DISTRICT

Lund Waterworks
Assessment Roll Bylaw No. 52, 2023 Parcel
Categories & Service Area Boundary
Information Map
Updated May 8, 2024

Note:
 In the event there is a conflict between the groupings shown on this map and the groupings shown on the 2024 Assessment Roll, the 2024 Assessment Roll prevails.



Assessment Roll Bylaw No. 52, 2023, groups parcels of land as follows:
 Group 1: Each and every parcel of land to which water can be supplied from the existing works of the Lund Waterworks District.
 Group 2: Each and every parcel of land which is installed one connection to the existing works of the Lund Waterworks District.
 Group 3: Each and every parcel of land which is installed two connections to the existing works of the Lund Waterworks District.
 Group 4: Each and every parcel of land which is installed three connections to the existing works of the Lund Waterworks District.
 Group 5: Each and every parcel of land which is installed four connections to the existing works of the Lund Waterworks District.
 Group 6: Each and every parcel of land which is installed five or more connections to the existing works of the Lund Waterworks District.
 Group 7: Each and every parcel of land to which water is supplied from the existing works of the Lund Waterworks District which has a connection size at least one and one-half inch (1.5") and smaller than three-inches (3.0").
 Group 8: Each and every parcel of land to which water is supplied from the existing works of the Lund Waterworks District which has a connection size three inches (3.0") or larger.
 Group 9: Each and every parcel of land within the Lund Waterworks District not classified into Group 1, 2, 3, 4, 5, 6, 7, or 8.



Legend

- Lund Water Service Area
- Surveyed ROWs / Easements / Interest Parcels (not complete)
- Water System Structure Footprint
- Water Facilities and dams
- Approximate Water Mains

Hydrants and Standpipes

Type

- Hydrant
- Standpipe
- ▲ Standpipe Approximate Position

Categorized Parcels

- Group 1
- Group 2
- Group 3
- Group 4
- Group 5
- Group 6
- Group 7
- Group 8
- Group 9